



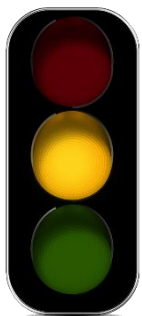
REGOLAMENTO PNEUMATICI CHIODATI - (ITA)

N° chiodi per gomma: **max 12 chiodi ogni 10cm (max 280 ca. per pneumatico)**

Tipo di chiodi: **"montecarlo" e simili, max 13mm di lunghezza (incastro + sporgenza)**

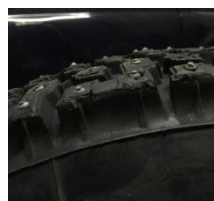


W210 "Sottozero" e simili



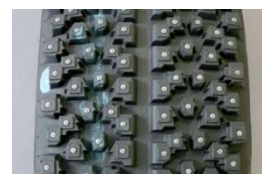
Pirelli WR3,
Sess Nica max 300 chiodi,
e simili

**SOLAMENTE CON
TEMPERATURE E
CONDIZIONI PISTA
OTTIMALI**



Black Rocket, Best Grip,
Sess Nica 540 chiodi,
Sweden Rally (piramidali)
e simili

VIETATI



L'utilizzo è a discrezione dello staff del Ghiacciodromo. In caso di dubbi, contattaci.

Ice Driving School.com

"L'università del Traverso..."



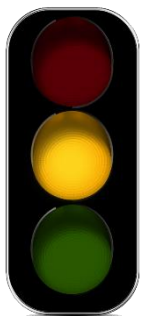
STUDDED TYRES REGULATION - (ENG)

N. of spikes per tyre: **max 12 spikes every 10cm, max 280 per tyre**

Type of spikes: **"montecarlo"** and similar, max 13mm in length in+out of tyre

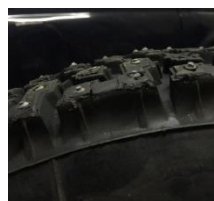


W210 "Sottozero" and similar



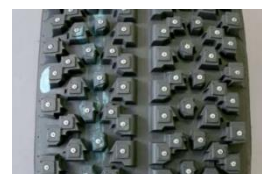
Pirelli WR3,
Sess Nica max 300 spikes,
and similar

**ONLY IF TEMPERATURES
AND CIRCUIT CONDITIONS
ALLOW IT**



Black Rocket, Best Grip,
Sess Nica 540 spikes,
Sweden Rally (pyramidal)
and similar

PROHIBITED



The use is at the discretion of Ghiacciodromo staff. If in doubt, please contact us.